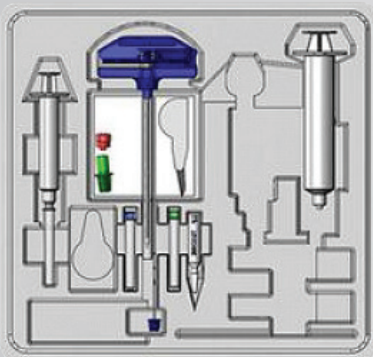


BONE MARROW BIOPSY PROCEDURE TRAYS

The Ranfac Bone Marrow Biopsy and Aspiration Tray features the Ranfac Snarecoil perform bone marrow procedures.

This double-stack tray offers convenience, safety and optimal procedure performance. It includes prepping and draping componentry as well as procedural products. The sterile tray helps eliminate the risk of contamination.

The section shown on front cover is low power (2x) of bone marrow Biopsy Needle.



To View a product animation
visit www.ranfac.com or
simply scan the barcode with
your Smartphone.

ORDERING INSTRUCTIONS



To place an order or to receive more information contact:
Ranfac Customer Service | 800.272.6322
Monday - Friday | 8:30 - 4:00



Email for more info: info@ranfac.com
Email for orders: orders@ranfac.com



ISO 9001

Precision instruments for specialized applications

*Patent numbers: U.S. Patent Nos. 5,522,398 & 5,634,473. Other patents pending

NeedleVise is a registered trademark of the Atrion Medical Products, Inc.

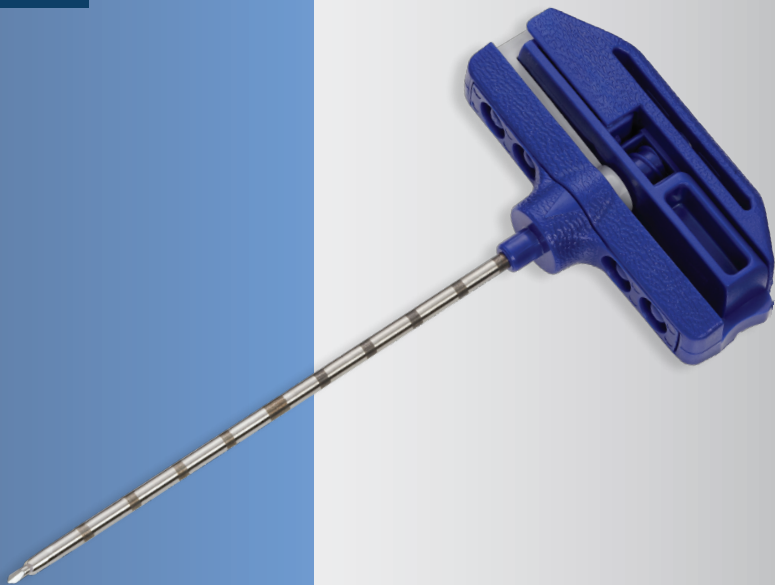
Ranfac® Corp. | 30 Doherty Avenue | P.O. Box 635 | Avon, Massachusetts | 02322-0635 | USA

Call toll free 1.800.2-RANFAC (1.800.272.6322) • Tel 508.588.4400 •
www.ranfac.com • Email: info@ranfac.com

Since 1888



SNARECOIL™ BONE MARROW BIOPSY NEEDLE



“

I have been using the Snarecoil needle for at least two years. I have used many different bone marrow needles, and the Snarecoil is my favorite needle. The procedure is faster since there is less manipulation of the needle before pulling it out with the biopsy –just flip the lever and give a couple of quick twists. My biopsies are frequently 3 to 4 cm in length.

–Dr. Robert Hall, MD. Pathologist



HOW IT WORKS

This design incorporates a patented* SNARECOIL™ located at the distal end of the needle lumen, which winds around and captures long, non-fragmented specimens.



The coil grabs the tissue specimen at the tip and retains it safely within the needle. This action, actuated by a lever in the instrument handle, eliminates the need to twist or manipulate the needle to sever the specimen.

The internal coiling mechanism with bone marrow specimen.

FEATURES

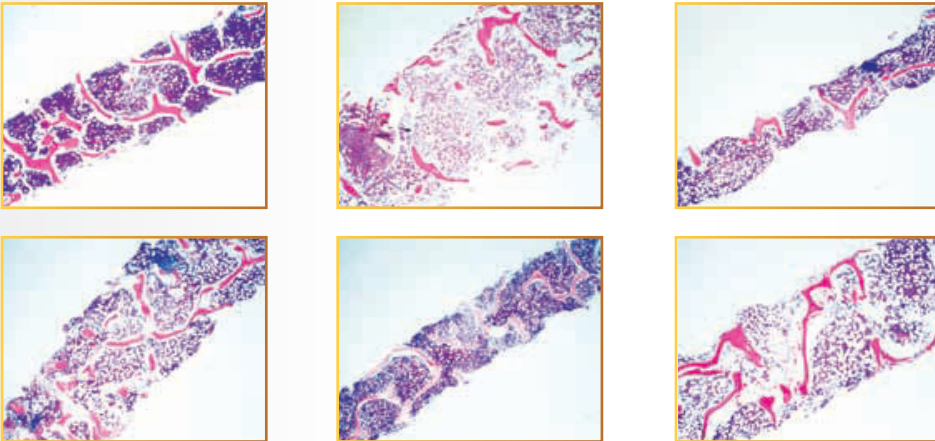
- Comfortable full palm handle design allowing user to apply significant pressure when needed. Ergonomically designed to minimize hand and arm fatigue.
- Boring Point on needle stylet allows for easy of penetration of the cortex.
- Specially designed Cannula provides superior coring.
- Marked Probe, allowing operator to see specimen retention.
- ISO Luer fitting in Handle.
- “OPEN” and “CLOSED” positions for determining status of the SNARECOIL mechanism.
- Tip Probe Guide to help facilitate placement of probe for removing specimen.
- Enclosed NeedleVISE per each sharp, securing each sharp after use and before disposal.
- NON Vented Luer cap provided with each needle.

VOLUME MATTERS

The Ranfac SNARECOIL™ Bone Marrow Biopsy Needle was designed to deliver unrivaled consistency and reliability in obtaining adequate bone marrow specimens for pathologic evaluation.

The photomicrographs shown here were taken with samples obtained from the Ranfac SNARECOIL™ Bone Marrow Biopsy Needle.

Volume of the biopsy is CRUCIAL for detecting focal marrow involvement by pathologic changes



The sections shown are low power (2x) of bone marrow biopsies obtained from Ranfac’s 8 and 11 gauge devices that measure between 1.8-2.5 cm in length. They are intact biopsies with parallel edges, maintained bone structure and lack of crush and aspiration artifacts.



Biopsy of a bone marrow with significant osteoporosis showing patchy cellularity.

Note the completely acellular areas (B) that raise the differential diagnosis of aplastic marrow.

Note the essentially normal marrow (A) at the end of the biopsy.

OBTAINING A BIOPSY

Please refer to the product's direction for use for official instructions.

